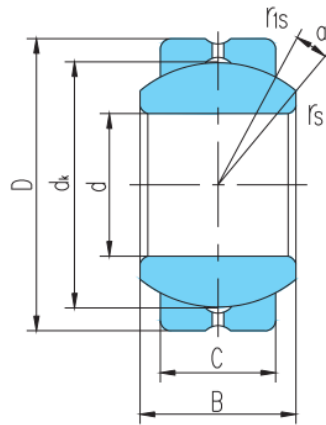
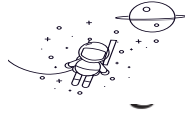


GEBJ..S (d 5~30)



select	Inquiry	轴承型号	外形尺寸mm								额定载	重量		
		Bearing number	d	D	B	C	dk	rs min	r1s min	a°	动载荷	静载荷		
		GEBJ5S	5	13	8	6	11.112	0.3	0.3	13	3.2	9	0.006	
		GEBJ6S	6	16	9	6.75	12.7	0.3	0.3	13	4.1	12	0.01	
		GEBJ8S	8	19	12	9	15.88	0.3	0.3	13	6.5	20	0.018	
		GEBJ10S	10	22	14	10.5	19.05	0.3	0.6	13	9.6	28	0.027	
		GEBJ12S	12	26	16	12	22.23	0.3	0.6	13	12	37	0.043	
		GEBJ14S	14	28	19	13.5	25.4	0.3	0.6	15	16	49	0.055	
		GEBJ16S	16	32	21	15	28.58	0.3	0.6	15	20	61	0.081	
		GEBJ18S	18	35	23	16.5	31.75	0.6	0.6	15	25	74	0.103	
		GEBJ20S	20	40	25	18	34.93	0.6	0.6	15	30	89	0.149	
		GEBJ22S	22	42	28	20	38.1	0.6	0.6	15	36	108	0.176	
		GEBJ25S	25	47	31	22	42.86	0.6	0.6	15	45	130	0.242	
		GEBJ30S	30	55	37	25	50.8	0.6	0.6	15	61	178	0.378	