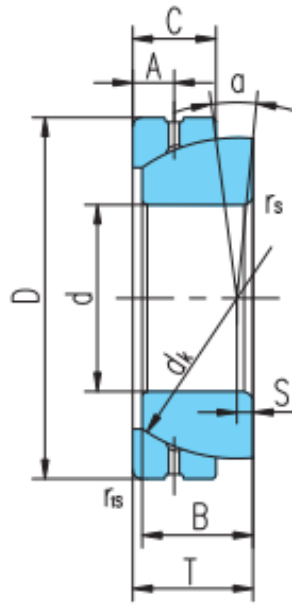
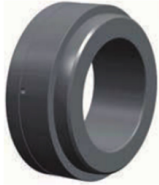


GACZ..S(d 12.7□152.4)



select	Inquiry	轴承型号	外形尺寸mm										额定载重	重量
		Bearing number	d	D	B	C	T	dk	S	A	rsr _{1s} max	a°	静载荷 kN	静载 kg
GACZ12S	12.7	22.225	6.86	4.83	7.62	18.26	1.3	2.39	0.51	7	6	18	0.013	
GACZ12S	0.5	0.875	0.27	0.19	0.3	0.719	0.051	0.094	0.02	7	6	18	0.013	
GACZ15S	15.875	26.988	8.64	6.35	9.4	22.83	1.48	2.77	0.76	6	10	31	0.025	
GACZ15S	0.625	1.0625	0.34	0.25	0.37	0.899	0.058	0.109	0.03	6	10	31	0.025	
GACZ19S	19.05	31.75	10.41	7.87	11.18	27.43	1.79	3.18	1	6	16	47	0.038	
GACZ19S	0.75	1.25	0.41	0.31	0.44	1.08	0.07	0.125	0.04	6	16	47	0.038	
GACZ22S	22.225	36.512	12.19	9.65	13.21	31.95	2.02	4.37	2	5.5	22	66	0.049	
GACZ22S	0.875	1.4375	0.48	0.38	0.52	1.258	0.08	0.172	0.08	5.5	22	66	0.049	
GACZ25S	25.4	41.275	13.97	11.18	15.24	36.5	2.54	5.16	2	6	29	87	0.085	
GACZ25S	1	1.625	0.55	0.44	0.6	1.437	0.1	0.203	0.08	6	29	87	0.085	
GACZ31S	31.75	50.8	17.78	13.97	18.8	45.59	3.36	5.94	2	6	47	142	0.159	
GACZ31S	1.25	2	0.7	0.55	0.74	1.795	0.132	0.234	0.08	6	47	142	0.159	
GACZ34S	34.925	55.562	19.56	15.24	21.34	49.2	3.69	7.14	2.54	4	53	159	0.213	
GACZ34S	1375	2.1875	0.77	0.6	0.84	1.937	0.145	0.281	0.1	4	53	159	0.213	
GACZ38S	38.1	61.912	21.34	16.76	23.11	54.74	3.93	7.92	2.54	5.5	66	197	0.301	
GACZ38S	1.5	2.4375	0.84	0.66	0.91	2.155	0.155	0.312	0.1	5.5	66	197	0.301	
GACZ44S	44.45	71.438	24.89	20.07	27.18	63.88	4.72	8.33	2.54	6	91	273	0.458	
GACZ44S	1.75	2.8125	0.98	0.79	1.07	2.515	0.186	0.328	0.1	6	91	273	0.458	

GACZ..S(d 12.7□152.4)

GACZ50S	50.8	80.962	28.7	23.37	31.24	73.02	5.51	9.52	3.56	5.5	122	365	0.671
GACZ50S	2	3.1875	1.13	0.92	1.23	2.875	0.217	0.375	0.14	5.5	122	365	0.671
GACZ57S	57.15	90.488	32.26	26.67	35.31	82.17	6.18	11.51	3.56	5.5	155	466	0.948
GACZ57S	2.25	3.5625	1.27	1.05	1.39	3.235	0.243	0.453	0.14	5.5	155	466	0.948
GACZ63S	63.5	100.013	36.07	29.97	39.12	91.19	6.79	12.7	3.56	5	196	589	1.13
GACZ63S	2.5	3.9375	1.42	1.18	1.54	3.59	0.267	0.5	0.14	5	196	589	1.13
GACZ69S	69.85	111.125	39.62	32.38	43.18	100.33	7.46	13.08	4.6	5	231	694	1.75
GACZ69S	2.75	4.375	1.56	1.275	1.7	3.95	0.294	0.515	0.18	5	231	694	1.75
GACZ76S	76.2	120.65	43.43	35.69	47.24	109.52	8.17	14.68	4.6	5	279	838	2.28
GACZ76S	3	4.75	1.71	1.405	1.86	4.312	0.322	0.578	0.18	5	279	838	2.28
GACZ82S	82.55	130.175	47.24	39.24	51.56	118.74	9.04	16.66	4.6	5	332	995	2.89
GACZ82S	3.25	5.125	1.86	1.545	2.03	4.675	0.356	0.656	0.18	5	332	995	2.89