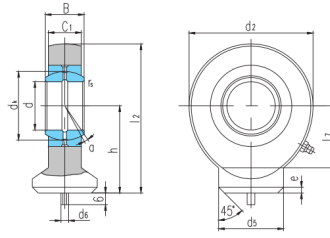


# SK...E(d 10□12)



轴承型号

外形尺寸mm

额定载重量  
静载 kg

select Inquiry

Bearing number

d B dk C<sub>1</sub> d<sub>2</sub> h l<sub>2</sub> l<sub>7</sub> d<sub>5</sub> d<sub>6</sub> e r<sub>s</sub> a°

动载  
静载 kg

SK10E <sub>1)</sub>	10	9	16	7	29	24	38.5	15	15	3	2	0.3	12	8.1	15	0.041
SK12E <sub>1)</sub>	12	10	18	8	34	27	44	17.5	17.5	3	2	0.3	10	10	21	0.066