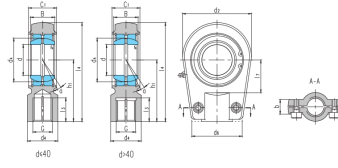


SIR...ES(d 20□120)



select	Inquiry	轴承型号		外形尺寸mm															额定载荷kN		锁紧螺重
		Bearing number	d	B	d _k	C ₁	d ₂	G 6H	h ₁	l ₃	l ₄	l ₇	d ₄	d ₆	b	r _s	a°	动载荷	静载荷	Screw kg	
SIR20ES	20	16	29	19	56	M16x1.5	50	17	80	25	25	46	20	0.3	9	30	81	M8x20	0.44		
SIR25ES	25	20	35.5	23	56	M16x1.5	50	17	80	25	25	46	21	0.6	7	48	72	M8x20	0.47		
SIR30ES	30	22	40.7	28	64	M22x1.5	60	23	94	30	32	50	26	0.6	6	62	106	M8x25	0.77		
SIR35ES	35	25	47	30	78	M28X1.5	70	29	112	38	40	66	28	0.6	6	79	153	M10x30	1.24		
SIR40ES	40	28	53	35	94	M35X1.5	85	36	135	45	49	76	33	0.6	7	99	250	M10x35	2.12		
SIR50ES	50	35	66	40	116	M45x1.5	105	45	168	55	61	90	37	0.6	6	156	365	M12x40	3.74		
SIR60ES	60	44	80	50	130	M58x1.5	130	59	200	65	75	120	46	1	6	245	400	M16x45	6.49		
SIR70ES SIR70ES-D ¹⁾	70	49	92	55	154	M65X1.5	150	66	232	75	86	130	51	1	6	313	540	M16x50	9.88		
SIR80ES SIR80ES-D ¹⁾	80	55	105	60	176	M80x2	170	81	265	80	105	160	55	1	6	400	670	M20x55	14.2		
SIR90ES SIR90ESD ¹⁾	90	60	115	65	206	M100x2	210	101	323	90	124	180	60	1	5	488	980	M20x60	23.5		
SIR100ES	100	70	130	70	231	M110x2	235	111	360	105	138	200	65	1	7	607	1120	M24x65	32.14		
SIR110ES	110	70	140	80	266	M120x3	265	125	407	115	152	220	74	1	6	654	1700	M24x80	47.6		
SIR120ES	120	85	160	90	340	M130x3	310	135	490	140	172	257	84	1	6	950	2900	M24x80	72		