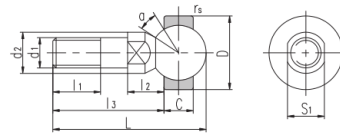
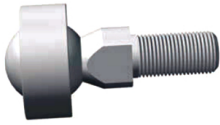


SQD..(d 5□16)



select	Inquiry	轴承型号	外形尺寸Dimensions											额定静	重
		Bearing number	$d_1$	$d_2$	$l_1$	$l_2$	$L_3$	L	$S_1$	C	D	$r_s$ min	$a^\circ$	Static load ratings kN	量 kg
SQD5	M5	9	8	8	19	27.5	7	6	16	0.3	25	2	0.014		
SQD6	M6	10	11	8.8	23.8	33.5	8	6.75	18	0.3	25	3.2	0.021		
SQD8	M8	12	12	11.6	28.6	41	10	9	22	0.3	25	5.7	0.042		
SQD10	M10xl.25	14	15	14.2	34.2	49	11	10.5	26	0.3	25	9.2	0.067		
SQD12	M12xl.25	17	17	15.1	38.1	55.1	15	12	30	0.5	25	14	0.108		
SQD14	M14xl.5	19	22	16.8	51.3	70.7	17	13.5	34	0.5	20	19	0.167		
SQD16	M16X1.5	22	23	18	54.5	76.3	19	15	38	0.5	20	26	0.238		