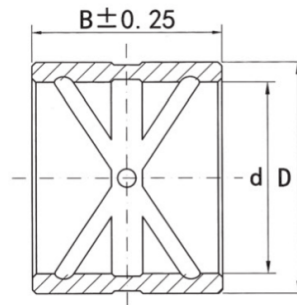
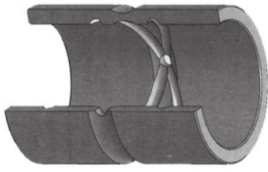


轴套B..系列



select	Inquiry	型号 Part No.	尺寸Dimensions mm 重量Weight		
			d	D	B
B 324230	32 + 0.139 +0.119	42 + 0.139 +0.034	30	0.135	
B 354540	35 + 0.173 +0.138	45 + 0.068 +0.043	40	0.195	
B 405038	40 + 0.159 +0.120	50 + 0.086 +0.070	38	0.205	
B 405040	40 + 0.139 +0.119	50 + 0.059 +0.034	40	0.215	
B 455563	45 + 0.169 +0.130	55 + 0.106 +0.087	63	0.383	
B 455573	45 + 0.169 +0.130	55 + 0.106 +0.087	73	0.452	
B 506048	50 + 0.169 +0.130	60 + 0.106 +0.087	48	0.32	
B 506053	50 + 0.323 +0.256	60 + 0.106 +0.087	53	0.355	
B 506063	50 + 0.169 +0.130	60 + 0.106 +0.087	63	0.425	
B 556553	55 + 0.305 +0.237	65 + 0.106 +0.087	53	0.39	
B 556558	55 + 0.134 +0.060	65 + 0.078 +0.059	58	0.425	
B 557060	55 + 0.186 +0.140	70 + 0.121 +0.102	60	0.44	
B 557075	55 + 0.334 +0.267	70 + 0.121 +0.102	75	0.82	
B 557090	55 + 0.334 +0.267	70 + 0.121 +0.102	90	0.955	
B 607032	60 + 0.166 +0.146	70 + 0.073 +0.043	32	0.553	
B 607038	60 + 0.186 +0.140	70 + 0.121 +0.102	38	0.255	
B 607548	60 + 0.186 +0.140	75 + 0.121 +0.102	48	0.55	
B 607563	60 + 0.186 +0.140	75 + 0.121 +0.102	63	0.775	
B 6075100	60 + 0.334 +0.267	75 + 0.121 +0.102	100	1.213	
B 658060	65 + 0.186 +0.140	80 + 0.121 +0.102	60	780	
B 658090	65 + 0.327 +0.260	80 + 0.121 +0.102	90	0.985	

轴套B..系列

B 708575	70 + 0.196 +0.150	85 + 0.146 +0.124	75	1.05	
B 759090	72 + 0.196 +0.150	90 + 0.146 +0.124	90	1.2	
B 809595	80 + 0.342 +0.283	95 + 0.146 +0.124	95	1.355	