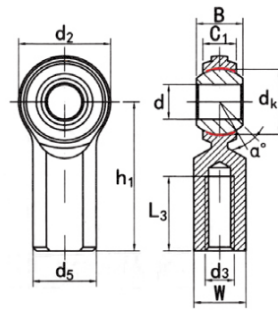


CF...T(d 4.826~19.05)



select	Inquiry	型号Part No.		尺寸Dimensions mm											载 荷Lord ratings		重量 kg
		右螺纹 Right hand	左螺纹 Left hand	d	d ₃ UNF-2B	B	C ₁	d ₂	d ₅	h ₁	L ₃ min	d _k	w	a	KN		
CF3T	CFL3T	4.826	10-32	7.92	5.94	15.875	10.31	26.97	12.7	11.1	7.92	10	8.02	0.018			
CF4T	CFL4T	6.35	1/4-28	9.53	6.35	19.05	11.91	33.32	17.45	12.7	9.53	13.5	16.082	0.023			
CF 5T	CFL5T	7.938	5/16-24	11.1	7.92	22.23	12.7	34.93	17.45	15.88	11.1	11	28.693	0.036			
CF6T	CFL6T	9.525	3/8-24	12.7	9.12	25.4	17.45	41.28	20.62	18.26	14.27	11	38.371	0.059			
CF7T	CFL7T	11.113	7/16-20	14.27	10.31	28.58	19.05	46.02	23.8	20.62	15.88	10.5	41.676	0.082			
CF8T	CFL8T	12.7	1/2-20	15.88	11.5	33.32	22.23	53.98	26.97	23.8	19.05	10	67.299	0.132			
CF 10T	CFL10T	15.875	5/8-18	19.05	12.29	38.1	25.4	63.5	34.93	28.58	22.23	13	75.271	0.195			
CF 12T	CFL12T	19.05	3/4-16	22.23	15.06	44.45	28.58	73.03	39.67	33.32	25.4	12	113.642	0.295			