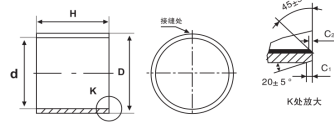
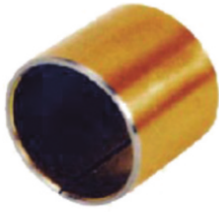
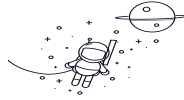


# CSI系列轴承1



select Inquiry		d	D	轴径 Shaft Dia	座孔 Housing bore H7	壁厚 Wall thickness	C <sub>1</sub>	C <sub>2</sub>	H 0 -0.40									
									20	25	30	40	50	60	70	80	100	
45	50	45 -0.025 -0.050	50 +0.025	2.5 +0.005 -0.040	1.2	0.6	4520	4525	4530	4540	4550	4560						
50	55	50 -0.030 -0.060	55 +0.030	2.5 +0.005 -0.040	1.2	0.6	5020		5030	5040	5050	5060						
55	60	55.50 -0.030 -0.060	60.50 +0.030	2.5 +0.005 -0.040	1.2	0.6			5530	5540	5550	5560						
60	65	60 -0.030 -0.060	65 +0.030	2.5 +0.005 -0.040	1.2	0.6			6030	6040	6050	6060	6070					
65	70	65 -0.030 -0.060	70 +0.030	2.5 +0.005 -0.040	1.2	0.6			6530	6540	6550	6560	6570					
70	75	70 -0.030 -0.060	75 +0.030	2.5 +0.005 -0.040	1.2	0.6			7030	7040	7050	7060	7070	7080				
75	80	75 -0.030 -0.060	80 +0.030	2.5 +0.005 -0.040	1.2	0.6			7530	7540	7550	7560	7570	7580				
80	85	80 -0.035	85 +0.035	2.5 +0.010 -0.060	1.4	0.7				8040	8050	8060	8070	8080	80100			
85	90	85 -0.035	90 +0.035	2.5 +0.010 -0.060	1.4	0.7				8540		8560		8580	85100			
90	95	90 -0.035	95 +0.035	2.5 +0.010 -0.060	1.4	0.7				9040	9050	9060		9080	90100			
95	100	95 -0.035	100 +0.035	2.5 +0.010 -0.060	1.4	0.7					9550	9560		9580	95100			
100	105	100 -0.035	105 +0.035	2.5 +0.010 -0.060	1.4	0.7					10050	10060		10080	100100			
105	110	105 -0.035	110 +0.035	2.5 +0.010 -0.060	1.4	0.7						10560		10580	105100			
110	115	110 -0.035	115 +0.035	2.5 +0.010 -0.060	1.4	0.7						11060		11080				
120	125	120 -0.040	125 +0.035	2.5 +0.035 -0.085	1.6	0.8						12060		12080	120100			

### CSI系列轴承1

125	130	125 -0.040	130 -0.040	2.5 +0.035 -0.085	1.6	0.8							12560			125100
130	135	130 -0.040	135 +0.040	2.5 +0.035 -0.085	1.6	0.8							13060	13080		130100
140	145	140 -0.040	145 +0.040	2.5 +0.035 -0.085	1.6	0.8							14060	14080		140100
150	155	150 -0.040	155 +0.040	2.5 +0.035 -0.085	1.6	0.8					15050		15060	15080		150100
160	165	160 -0.040	165 +0.040	1.5 +0.005 -0.025	0.8	0.4							16060	16080		160100
180	185	180 -0.046	185 +0.046	2.5 +0.035 -0.085	1.6	0.8								18080		180100
190	195	190 -0.046	195 +0.046	2.5 +0.035 -0.085	1.6	0.8								19080		190100
200	205	200 -0.046	205 +0.046	2.5 +0.035 -0.085	1.6	0.8								20080		200100
220	225	220 -0.046	225 +0.046	2.5 +0.035 -0.085	1.6	0.8								22080		220100
250	255	250 -0.046	255 +0.046	2.5 +0.035 -0.085	1.6	0.8								25080		250100
260	265	260 -0.046	265 +0.046	2.5 +0.035 -0.085	1.6	0.8								26080		260100
280	285	280 -0.046	285 +0.046	2.5 +0.035 -0.085	1.6	0.8								28080		280100
300	305	300 -0.046	305 +0.046	2.5 +0.035 -0.085	1.6	0.8								30080		300100