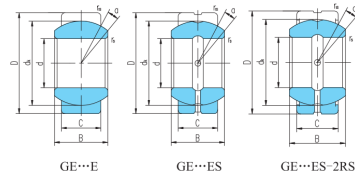
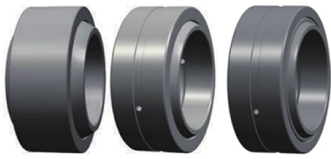


# GE...E(d 4~12)



select Inquiry	轴承型号		外形尺寸mm									额定载荷kN 重量	
	-	-	d	D	B	C	d <sub>k</sub>	r <sub>s</sub> min	r <sub>1s</sub> min	a°	动载荷	静载荷 kg	
GE10E			10	19	9	6	16	0.3	0.3	12	8.1	40	0.011
GE12E			12	22	10	7	18	0.3	0.3	10	10	53	0.017
GE8E			8	16	8	5	13	0.3	0.3	15	5.5	27	0.007
GE4E			4	12	5	3	8	0.3	0.3	16	2	10	0.003
GE5E			5	14	6	4	10	0.3	0.3	13	3.4	17	0.005
GE6E			6	14	6	4	10	0.3	0.3	13	3.4	17	0.004