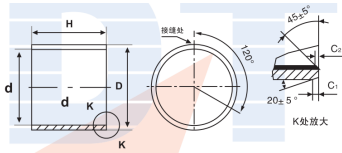
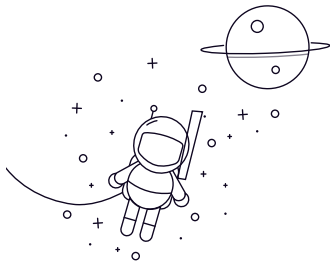


CF系列双金属复合轴承2



select Inquiry	d	D	轴径 Shaft Dia	座孔 Housing bore H7	壁厚 Wall thickness	Go	No.Go	C ₁	C ₂	H 0 -0.40									
										20	25	30	40	50	60	80	90	100	
45	50	45 -0.025 -0.050	50 +0.025	2.5 -0.025	50.125	50.075	1.5	1.0	4520	4525	4530	4540	4550						
50	55	50-0.030 -0.060	55 +0.030	2.5 -0.025	55.125	55.075	1.5	1.0	5020	5025	5030	5040	5050						
55	60	55-0.030 -0.060	60 +0.030	2.5 -0.025	60.125	60.075	1.5	1.0			5530	5540	5550	5560					
60	65	60 -0.030 -0.060	65 +0.030	2.5 -0.025	65.145	65.085	1.5	1.0			6030	6040	6050	6060					
65	70	65 -0.030 -0.060	70 +0.030	2.5 -0.025	70.145	70.085	1.5	1.0			6030	6040	6050	6060					
70	75	70 -0.030 -0.060	75 +0.030	2.5 -0.025	75.145	75.085	1.5	1.0			6030	6040	6050	6060	6080	7090			
75	80	75 -0.030 -0.060	80 +0.030	2.5 -0.025	80.145	80.085	1.5	1.0			7530	7540	7550	7560	7580				
80	85	80-0.030 -0.060	85 +0.035	2.5 -0.025	85.145	85.085	1.5	1.0				8040	8050	8060	8030				
84	90	84-0.036 -0.071	90 +0.035	3 -0.025	90.165	90.100	1.8	1.2				8440	8450	8460	8480				
89	95	89-0.036 -0.071	95 +0.035	3 -0.025	95.165	95.100	1.8	1.2				8940	8950	8960	8980				
94	100	94-0.036 -0.071	100 +0.035	3 -0.025	100.165	100.100	1.8	1.2					9450	9460	9480	9490			
99	105	99-0.036 -0.071	105 +0.035	3 -0.025	105.185	105.115	1.8	1.2					9950	9960	9980	9990			
104	110	104-0.036 -0.071	110 +0.035	3 -0.025	110.185	110.115	1.8	1.2					10450	10460	10480				
109	115	109-0.036 -0.071	110 +0.035	3 -0.025	115.185	115.115	1.8	1.2					10950	10960	10980				
114	120	114-0.036 -0.071	120 +0.035	3 -0.025	120.185	120.115	1.8	1.2					11450	11460	11480				
119	125	119-0.036 -0.071	125 +0.035	3 -0.025	125.185	125.115	1.8	1.2					11950	11960	11980				
123	130	123 -0.043 -0.083	130 +0.040	3.5 -0.025	130.205	130.130	2	1.5					12350	12360	12380			123100	
128	135	128-0.043 -0.083	135 +0.040	3.5 -0.025	135.205	135.13	2	1.5					12850	12860	12880			128100	
133	140	133-0.043 -0.083	140 +0.040	3.5 -0.025	140.205	140.130	2	1.5					13350	13360	13380			133100	
138	145	138-0.043 -0.083	145 +0.040	3.5 -0.025	145.205	145.130	2	1.5						13860	13880			138100	
143	150	143-0.043 -0.083	150 +0.040	3.5 -0.025	150.235	150.15	2	1.5						14360	14380			143100	

CF系列双金属复合轴承2

148	155	148 -0.043 -0.083	155 +0.040	3.5 -0.025	155.235	155.150	2	1.5						14860	14880	14890	148100
153	160	153-0.043 -0.083	160 +0.040	3.5 -0.025	160.235	160.150	2	1.5						15360	15380	15390	
158	165	158-0.043 -0.083	165 +0.040	3.5 -0.025	165.235	165.150	2	1.5						15860	15880		158100
163	170	163-0.043 -0.083	170 +0.040	3.5 -0.025	170.155	170.170	2	1.5						16360	16380		163100
168	175	168-0.043 -0.083	175 +0.046	3.5 -0.025	175.255	175.170	2	1.5						16860	16880		168100
173	180	173 -0.043 -0.083	180 +0.046	3.5 -0.025	180.255	180.170	2	1.5						17360	17380		173100