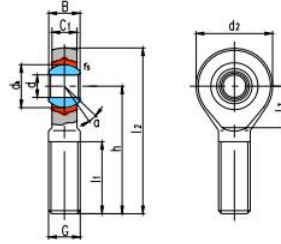


# SAZP...N(d 4.83□19.05)



select	Inquiry	轴承型号	外形尺寸mm											Basic Load Rating(kN) Weight			
		Bearing number	d	B	d <sub>k</sub>	C <sub>1 max</sub>	d <sub>2</sub>	G	h	l <sub>1 min</sub>	l <sub>2</sub>	l <sub>7</sub>	r <sub>s min</sub>	α°≈	Cr	Cor	kg
SAZP4N	4.83	7.92	11.1	6.35	15.88	10-32	31.75	19.05	39.7	—	0.3	10	3.3	5.38	0.013		
SAZP4N	0.19	0.312	0.437	0.25	0.625	10-32	1.25	0.75	1.563	—	0.012	10	3.3	5.38	0.013		
SAZP6N	6.35	9.53	12.7	7.14	19.05	1/4-28	39.67	25.4	49.2	—	0.3	13	6.8	10.9	0.022		
SAZP6N	0.25	0.375	0.5	0.281	0.75	1/4-28	1.562	1	1.937	—	0.012	13	6.8	10.9	0.022		
SAZP7N	7.94	11.1	15.88	8.74	22.23	5/16-24	47.63	31.75	58.72	—	0.3	10	7.6	12.2	0.037		
SAZP7N	0.3125	0.437	0.625	0.344	0.875	5/16-24	1.875	1.25	2.312	—	0.012	10	7.6	12.2	0.037		
SAZP9N	9.53	12.7	18.26	10.31	25.4	3/8-24	49.23	31.75	61.93	—	0.6	9	11.9	18.7	0.055		
SAZP9N	0.375	0.5	0.719	0.406	1	3/8-24	1.938	1.25	2.438	—	0.024	9	11.9	18.7	0.055		
SAZP11N	11.11	14.27	20.62	11.1	28.58	7/16-20	53.98	34.93	68.28	—	0.6	11	17.4	23.8	0.078		
SAZP11N	0.4375	0.562	0.812	0.437	1.125	7/16-20	2.125	1.375	2.688	—	0.024	11	17.4	23.8	0.078		
SAZP12N	12.7	15.88	23.81	12.7	33.32	1/2-20	61.93	38.1	78.59	—	0.6	9	19.9	28.6	0.12		
SAZP12N	0.5	0.625	0.937	0.5	1.312	1/2-20	2.438	1.5	3.094	—	0.024	9	19.9	28.6	0.12		
SAZP15N	15.88	19.05	28.58	14.27	38.1	5/8-18	66.68	41.28	85.73	18.2	0.6	11	22.9	36.9	0.18		
SAZP15N	0.625	0.75	1.125	0.562	1.5	5/8-18	2.625	1.625	3.375	0.717	0.024	11	22.9	36.9	0.18		
SAZP19N	19.05	22.23	33.32	17.45	44.45	3/4-16	73.03	44.45	95.25	20.9	0.6	10	30.2	48.5	0.29		
SAZP19N	0.75	0.875	1.312	0.687	1.75	3/4-16	2.875	1.75	3.75	0.823	0.024	10	30.2	48.5	0.29		