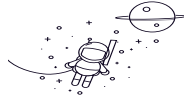


# SIK...C(d 5□20)



select	Inquiry	轴承型号	外形尺寸mm														Basic Load Rating(kN)		Weight		
		Bearing number	d	B	d <sub>k</sub>	C <sub>1max</sub>	d <sub>2</sub>	G 6H	h <sub>1</sub>	l <sub>3min</sub>	l <sub>4</sub>	l <sub>5</sub>	l <sub>7</sub>	W	d <sub>3</sub>	d <sub>4</sub>	r <sub>smin</sub>	α°≈	Cr	Cor	kg
SIK5C	5	8	11.112	6	19.5	M5	30	12	39.8	5	9.5	10	10	13	0.3	4	3.6	4.6	0.024		
SIK6C	6	9	12.7	7.5	21.2	M6	30	9	40.7	5	11	10	10	13	0.3	9	4.7	5.2	0.028		
SIK8C	8	12	15.88	9.5	25.5	M8	36	12	48.8	5	13	13	12.5	16	0.3	12	7.6	8.2	0.053		
SIK10C	10	14	19.05	11.5	31	M10	43	19	58.6	6.5	16	16	15	19	0.3	10	12	15	0.11		
SIK12C	12	16	22.23	12.5	34	M12	50	23	67	6.5	18	18	17.5	22	0.3	12	14	19	0.14		
SIK14C	14	19	25.4	14.5	38	M14	57	23	76	8	20	21	20	25	0.3	14	19	24	0.2		
SIK16C	16	21	28.58	15.5	42	M16	64	24	85	8	21	24	22	27	0.3	14	23	29	0.25		
SIK18C	18	23	31.75	17.5	46	M18×1.5	71	27	94	10	22.5	27	25	31	0.6	13	29	34	0.35		
SIK20C	20	25	34.93	18.5	50	M20×1.5	77	30	102	10	25	30	27.5	34	0.6	14	34	40	0.43		