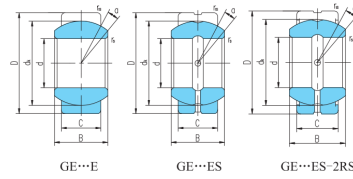
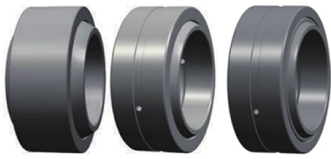


GE...ES,ES-2RS (d 15~300)



select	Inquiry	轴承型号		外形尺寸mm									额定载 荷kN	重量
		-	-	d	D	B	C	dk	rs min	r1s min	a°	动载荷	静 载 kg 荷	
GE300ES	GE300ES-2RS	300	430	165	120	375	1.1	1.1	7	3800	19100	77.6		
GE280ES	GE280ES-2RS	280	400	155	120	350	1.1	1.1	6	3570	17850	64.9		
GE260ES	GE260ES-2RS	260	370	150	110	325	1.1	1.1	7	3030	15190	51.5		
GE240ES	GE240ES-2RS	240	340	140	100	300	1.1	1.1	8	2550	12700	39.7		
GE220ES	GE220ES-2RS	220	320	135	100	275	1.1	1.1	8	2320	11600	35.7		
GE200ES	GE200ES-2RS	200	290	130	100	250	1.1	1.1	7	2120	10600	28.4		
GE160ES	GE160ES-2RS	160	230	105	80	200	1	1	8	1360	6800	14.1		
GE180ES	GE180ES-2RS	180	260	105	80	225	1.1	1.1	6	1530	7650	18.5		
GE140ES	GE140ES-2RS	140	210	90	70	180	1	1	7	1070	5350	11.2		
GE120ES	GE120ES-2RS	120	180	85	70	160	1	1	6	950	4750	8.11		
GE110ES	GE110ES-2RS	110	160	70	55	140	1	1	6	654	3270	4.83		
GE100ES	GE100ES-2RS	100	150	70	55	130	1	1	7	607	3030	4.44		
GE90ES	GE90ES-2RS	90	130	60	50	115	1	1	5	488	2440	2.79		
GE80ES	GE80ES-2RS	80	120	55	45	105	1	1	6	400	2000	2.32		
GE70ES	GE70ES-2RS	70	105	49	40	92	1	1	6	313	1560	1.57		
GE60ES	GE60ES-2RS	60	90	44	36	80	1	1	6	245	1220	1.03		
GE55ES	GE55ES-2RS	55	85	40	32	74	0.6	1	7	200	1000	0.864		
GE45ES	GE45ES-2RS	45	68	32	25	60	0.6	1	7	127	637	0.421		
GE50ES	GE50ES-2RS	50	75	35	28	66	0.6	1	6	156	780	0.562		
GE40ES	GE40ES-2RS	40	62	28	22	53	0.6	1	7	99	495	0.318		

GE...ES,ES-2RS (d 15~300)

GE35ES	GE35ES-2RS	35	55	25	20	47	0.6	1	6	79	399	0.228
GE30ES	GE30ES-2RS	30	47	22	18	40.7	0.6	0.6	6	62	310	0.149
GE20ES	GE20ES-2RS	20	35	16	12	29	0.3	0.3	9	30	146	0.064
GE25ES	GE25ES-2RS	25	42	20	16	35.5	0.6	0.6	7	48	240	0.115
GE17ES	GE17ES-2RS	17	30	14	10	25	0.3	0.3	10	21	106	0.04
GE15ES	GE15ES-2RS	15	26	12	9	22	0.3	0.3	8	16	84	0.026