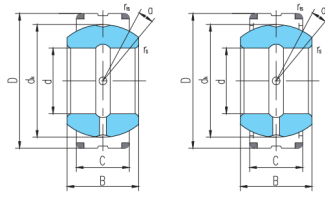
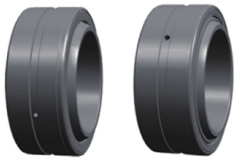


GEC...XS,XS-2RS (d 320~460)



GEC...XS

GEC...XS-2RS

select	Inquiry	Bearing No.		Dimensions(mm)								Basic Load Rating(kN)		Weight kg
		No.1	No.2	d	D	B	C	d <sub>k</sub>	r <sub>s</sub> min	r <sub>1s</sub> min	a°	Cr	Cor	
GEC320XS	GEC320XS-2RS	320	440	160	135	380	1.1	3	4	4400	22000	78		
GEC340XS	GEC340XS-2RS	340	460	160	135	400	1.1	3	3	4650	23200	83		
GEC360XS	GEC360XS-2RS	360	480	160	135	420	1.1	3	3	4800	24000	87		
GEC380XS	GEC380XS-2RS	380	520	190	160	450	1.5	4	4	6300	31500	129		
GEC400XS	GEC400XS-2RS	400	540	190	160	470	1.5	4	3	6550	32500	135		
GEC420XS	GEC420XS-2RS	420	560	190	160	490	1.5	4	3	6800	34500	141		
GEC440XS	GEC440XS-2RS	440	600	218	185	520	1.5	4	3	8650	42300	196		
GEC460XS	GEC460XS-2RS	460	620	218	185	540	1.5	4	3	9000	45000	204		