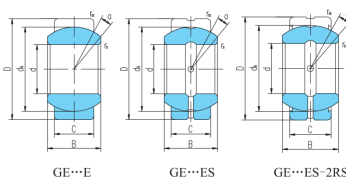
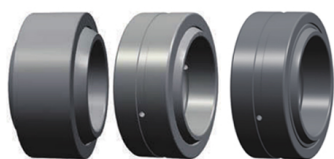


GE...ES,ES-2RS (d 15~300)



| select | Inquiry | Bearing No. | | Dimensions(mm) | | | | | | | | Basic Load Rating(kN) | | Weight kg |
|---------|-------------|-------------|------|----------------|-----|------|-----|-----|-----------|------------|-------|-----------------------|-----|-----------|
| | | No.1 | No.2 | d | D | B | C | dk | rs min | r1s min | a° | Cr | Cor | |
| GE300ES | GE300ES-2RS | 300 | 430 | 165 | 120 | 375 | 1.1 | 1.1 | 7 | 3800 | 19100 | 77.6 | | |
| GE280ES | GE280ES-2RS | 280 | 400 | 155 | 120 | 350 | 1.1 | 1.1 | 6 | 3570 | 17850 | 64.9 | | |
| GE260ES | GE260ES-2RS | 260 | 370 | 150 | 110 | 325 | 1.1 | 1.1 | 7 | 3030 | 15190 | 51.5 | | |
| GE240ES | GE240ES-2RS | 240 | 340 | 140 | 100 | 300 | 1.1 | 1.1 | 8 | 2550 | 12700 | 39.7 | | |
| GE220ES | GE220ES-2RS | 220 | 320 | 135 | 100 | 275 | 1.1 | 1.1 | 8 | 2320 | 11600 | 35.7 | | |
| GE200ES | GE200ES-2RS | 200 | 290 | 130 | 100 | 250 | 1.1 | 1.1 | 7 | 2120 | 10600 | 28.4 | | |
| GE160ES | GE160ES-2RS | 160 | 230 | 105 | 80 | 200 | 1 | 1 | 8 | 1360 | 6800 | 14.1 | | |
| GE180ES | GE180ES-2RS | 180 | 260 | 105 | 80 | 225 | 1.1 | 1.1 | 6 | 1530 | 7650 | 18.5 | | |
| GE140ES | GE140ES-2RS | 140 | 210 | 90 | 70 | 180 | 1 | 1 | 7 | 1070 | 5350 | 11.2 | | |
| GE120ES | GE120ES-2RS | 120 | 180 | 85 | 70 | 160 | 1 | 1 | 6 | 950 | 4750 | 8.11 | | |
| GE110ES | GE110ES-2RS | 110 | 160 | 70 | 55 | 140 | 1 | 1 | 6 | 654 | 3270 | 4.83 | | |
| GE100ES | GE100ES-2RS | 100 | 150 | 70 | 55 | 130 | 1 | 1 | 7 | 607 | 3030 | 4.44 | | |
| GE90ES | GE90ES-2RS | 90 | 130 | 60 | 50 | 115 | 1 | 1 | 5 | 488 | 2440 | 2.79 | | |
| GE80ES | GE80ES-2RS | 80 | 120 | 55 | 45 | 105 | 1 | 1 | 6 | 400 | 2000 | 2.32 | | |
| GE70ES | GE70ES-2RS | 70 | 105 | 49 | 40 | 92 | 1 | 1 | 6 | 313 | 1560 | 1.57 | | |
| GE60ES | GE60ES-2RS | 60 | 90 | 44 | 36 | 80 | 1 | 1 | 6 | 245 | 1220 | 1.03 | | |
| GE55ES | GE55ES-2RS | 55 | 85 | 40 | 32 | 74 | 0.6 | 1 | 7 | 200 | 1000 | 0.864 | | |
| GE45ES | GE45ES-2RS | 45 | 68 | 32 | 25 | 60 | 0.6 | 1 | 7 | 127 | 637 | 0.421 | | |
| GE50ES | GE50ES-2RS | 50 | 75 | 35 | 28 | 66 | 0.6 | 1 | 6 | 156 | 780 | 0.562 | | |
| GE40ES | GE40ES-2RS | 40 | 62 | 28 | 22 | 53 | 0.6 | 1 | 7 | 99 | 495 | 0.318 | | |
| GE35ES | GE35ES-2RS | 35 | 55 | 25 | 20 | 47 | 0.6 | 1 | 6 | 79 | 399 | 0.228 | | |
| GE30ES | GE30ES-2RS | 30 | 47 | 22 | 18 | 40.7 | 0.6 | 0.6 | 6 | 62 | 310 | 0.149 | | |
| GE20ES | GE20ES-2RS | 20 | 35 | 16 | 12 | 29 | 0.3 | 0.3 | 9 | 30 | 146 | 0.064 | | |

GE...ES,ES-2RS (d 15~300)

| | | | | | | | | | | | | |
|--------|------------|----|----|----|----|------|-----|-----|----|----|-----|-------|
| GE25ES | GE25ES-2RS | 25 | 42 | 20 | 16 | 35.5 | 0.6 | 0.6 | 7 | 48 | 240 | 0.115 |
| GE17ES | GE17ES-2RS | 17 | 30 | 14 | 10 | 25 | 0.3 | 0.3 | 10 | 21 | 106 | 0.04 |
| GE15ES | GE15ES-2RS | 15 | 26 | 12 | 9 | 22 | 0.3 | 0.3 | 8 | 16 | 84 | 0.026 |